

Civil Defense Farm Counseling Service Working In County

Jerry D. Horton, Agricultural Consultant, of the New York Civil Defense Technical Counseling Service, is working with the farmers in the County who have requested this service, as the result of its being offered by the State Civil Defense Commission and County Extension Agent Charles W. Hebblewaite.

Mr. Horton is now calling on the first group of 24 farmers who sent in requests for service cards provided by Mr. Hebblewaite. The Civil Defense Agricultural Consultant during his visit to these farms, measures farm buildings, secures engineering data and discusses the shelter protection program for the family and livestock.

The data developed by Mr. Horton is processed by electronic computers at the General Electric Co. in Schenectady from input data

sent by the Counseling Service in Albany. The computed analysis of each farm is returned to Albany, where it is processed and drawings of the farm buildings made. From the processed results and drawing the farmer receives a number of alternative emergency plans to show how he can, 1—Protect his family; 2—Protect his farm and 3—Recover and become productive again. The plans are

realistic and are based on the utilization of any materials which the farmer has available such as hay, grain, earth, tractors, and labor. By using such available resources the cost of a farm protection program is nominal. Further, the information in the report would be helpful in combating the effects of storms, fire, floods and other natural disasters.

This service in Allegany County

was arranged for at a meeting of George Dailey, New York State Civil Defense Commission; Rodney Sheffield, U.S.D.A. representative; John Clark, F.H.A. representative; Charles Hebblewaite, County Extension Agent and Robert L. Coulter, County Civil Defense Director in the late Spring. These men in commenting on the service

stressed its value and urged all farmers to participate.

The service is free. Arrangements for a visit by the Agricultural consultant can be made by our area farmers through either Mr. Sheffield or Mr. Hebblewaite's office in Belmont or through the local County Civil Defense office in Wellsville.

Legend has it that before the Crucifixion the berries of Christmas Holly were white instead of red as now.

ROSSERS'

Laundry And Dry Cleaning Co.

22-26 W. Fassett Street
WELLSVILLE PHONE 518

PICK-UP AND DELIVERY
IN ANDOVER

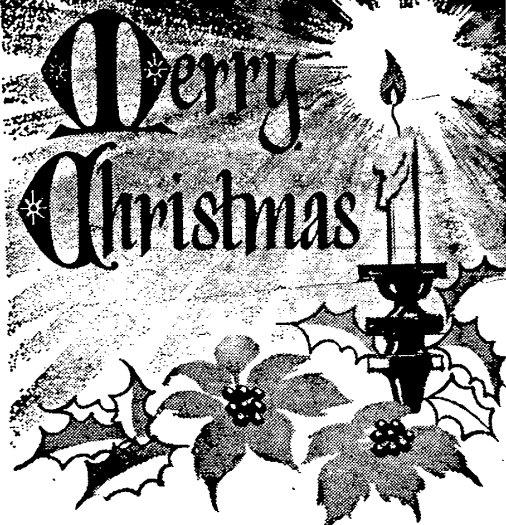
Mondays & Thursdays
BONDED STORAGE



... we sincerely thank you for your patronage.

HOTEL JOYCE

We Will Be Closed Christmas Day



... threshold of a bright new year.

FOSTERS AGENCY

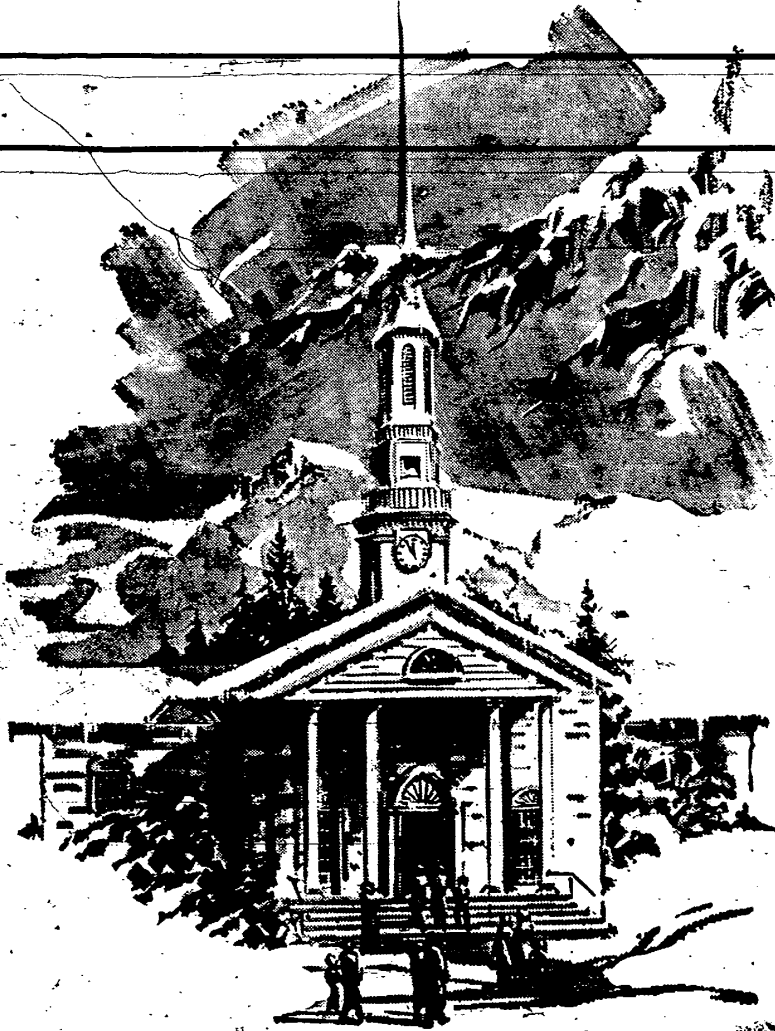
General Insurance



Our wish for you this Christmas: to experience as never before the fulfillment of the joyous Season.

**James B. Mulholland
Funeral Home**

Andover, N. Y. Dial 478-4375 or 478-3155



To you and yours, may we extend best wishes for a truly blessed holiday season

Pfuntner Sales & Service

Wellsville, New York