

# AND INSTRUCTIONS FOR VOTING

turn the pointers to their respective position, after which

### A FEW WORDS OF EXPLANATION

Each Pointer is labeled with the name of the candidate you wish to

turn DOWN. (If you wish to vote for a candidate you have not voted

are registered until you pull down the curtain lever to open the

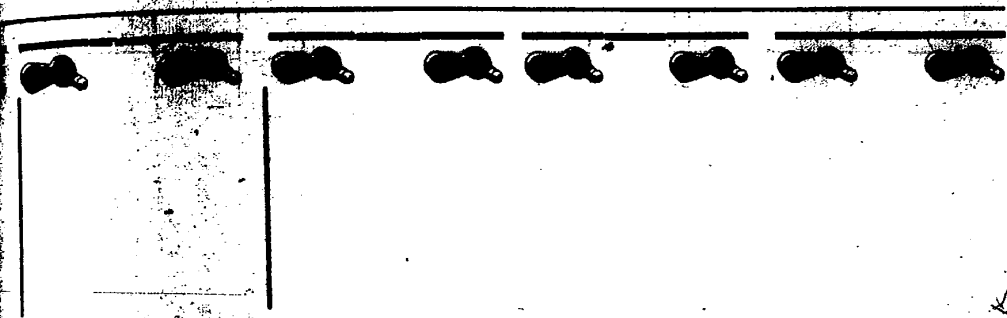
The machine is so arranged that you CANNOT turn down more than

In the case of an office to which two (or more) candidates are to be

### TWO SUGGESTIONS

FIRST: Read the Sample Ballot below carefully and decide which

SECOND: Call the Town Clerk and find out where a voting machine



8 Justice of the Supreme Court	9 Member of the Commons	10 State Senator	11 Member of Assembly	12 13 Coroner (VOTE FOR ANY TWO)	
8 A Republican E. Foeter PIPER	9 A Republican George A. REED	10 A Republican Joe E. HANLEY	11 A Republican William H. MacKENZIE	12 A Republican Frederick C. BALLARD	13 A Republican Nathaniel H. FULLER
8 B Democratic Francis T. FINDLAY	9 B Democratic John A. BISSELL	10 B Democratic Robert L. FLEISCHER	11 B Democratic George BLISS	12 B Democratic Dr. S. B. SCOTT	13 B Democratic Dr. A. H. LYMAN
8 C American Labor Francis T. FINDLAY	9 C American Labor John A. BISSELL		11 C American Labor Edmond BELL		

- 144 Leonard
- 145 Harold
- 146 Robert
- 147 Lucien
- 148 Donald
- 149 Gordon
- 150 Burton
- 151 Ralph
- 152 Ruel
- 153 Sidney
- 154 Earl
- 155 Roland
- 156 John C.
- 157 Theodor
- 158 Cornelius
- 159 Daniel
- 160 Martin
- 161 Charles
- 162 Raymond
- 163 Forrest
- 164 William
- 165 Orin
- 166 Clarence