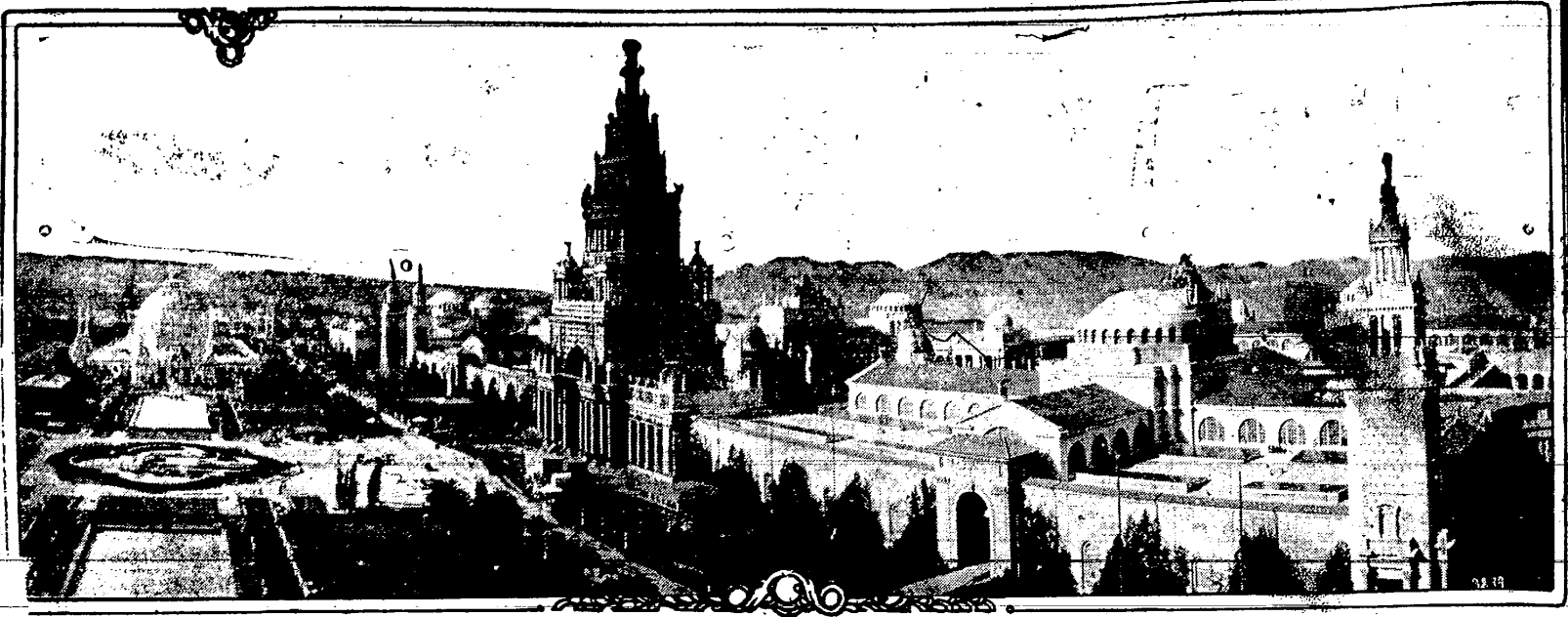


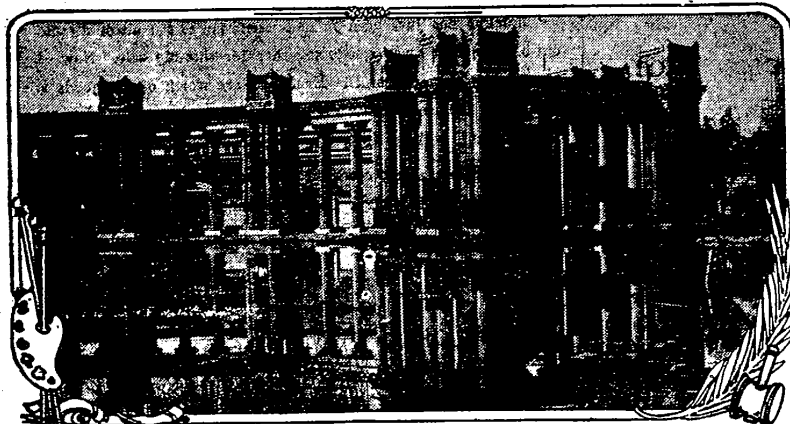
WHERE EYES OF THE WHOLE EARTH ARE LOOKING; WORLD'S GREATEST EXPOSITION AT GOLDEN GATE



A PART OF THE MAIN EXHIBIT SECTION OF THE GREAT PANAMA-PACIFIC INTERNATIONAL EXPOSITION.

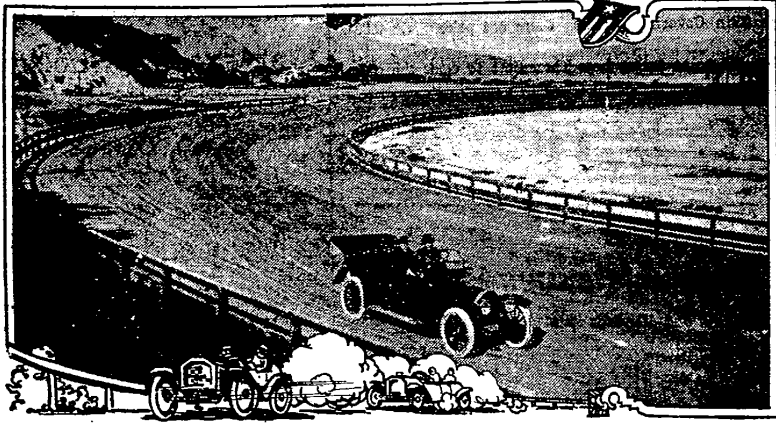
PANORAMA taken from the dome of Festival Hall at the Panama-Pacific International Exposition. The view shows the western part of the main group of exhibit palaces looking down the Avenue of Palma. The tall Tower of Jewels, in the center, which is 435 feet high, conceals the famous Golden Gate entrance to the bay of San Francisco. The domed structure at the left is the Palace of Horticulture. The other palaces shown, from left to right, are those of Education, Liberal Arts, Agriculture, Manufactures and Transportation. Beyond these is shown the bay of San Francisco, with Mount Tamalpais and the hills of Marin county in the background. In front of the Palace of Horticulture are the great South Gardens. The photograph was taken early in December, 1914, more than two months before the opening of the Exposition, Feb. 20, 1915.

Just a Hint of the Beauties of the Palace of Fine Arts at the Great 1915 Exposition



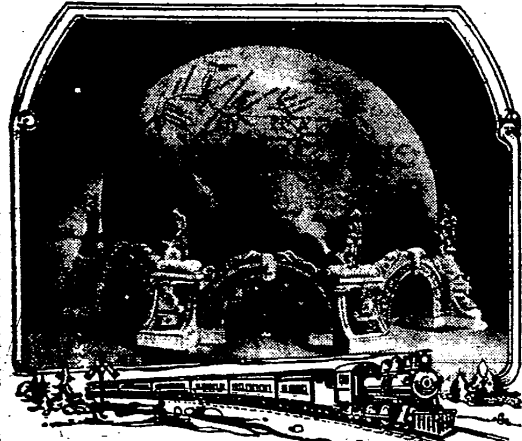
EXQUISITE colonnade of the Palace of Fine Arts at the Panama-Pacific International Exposition at San Francisco. The building, which is of steel and concrete construction, is Roman in architecture and fronts upon a great lagoon, which it partly envelops. The Palace of Fine Arts cost over \$800,000. Here will be seen a notable collection of the great works of foreign and American painters and sculptors.

One Turn of the Four Mile Course For the Big Auto Races to Be Held Inside the 1915 Exposition Gates



THE Vanderbilt Cup Race and the Grand Prix are early features of the Panama-Pacific International Exposition at San Francisco. The Vanderbilt Cup Race on Feb. 22 and the Grand Prix on Feb. 27. The Exposition course is the most novel ever laid out, and a part of it lies between the exhibit palaces, state buildings and foreign pavilions and parallel to the Golden Gate. The prize money for the two races is \$15,000, in addition to the cups.

Colossal Globe Shows Whole World at the Panama-Pacific Exposition



STUPENDOUS GLOBE SHOWING TRAINS IN OPERATION.

AN exhibit to the Palace of Transportation at the Panama-Pacific International Exposition that might easily take first rank if placed on the Zone, where the amusement concessions are located, is the mighty globe in the southwestern corner of the palace, commanding attention from every part of the great building. This globe, fifty-one feet in diameter, with the map of North America in relief, is the joint exhibit of four railroads—the Western Pacific, the Denver and Rio Grande, the Missouri Pacific and St. Louis and the St. Louis, Iron Mountain and Southern.

Across the face of this huge map, from San Francisco to St. Louis, is a railroad track in miniature. Trains cross and recross, making the entire trip in three minutes, electric flashes indicating the stations on the way. From the globe to the north wall of the building extends an annex sixty-five feet in length, fifty-six in width, and from the top of this annex rises in realistic effect on canvas the famous Marshall's pass of Colorado.

At intervals around the base of the globe and annex are sculptures of a farmer, representing agriculture; a miner, representing mines; a fisherman, for sports; a blacksmith, for commerce, with the slogan of the railroads is set in relief, "Comfort, Service, Scenery." In the center of the globe will be twenty-four models of cities and scenes along the route of the railroads. San Francisco will be seen, Denver, Salt Lake, Leadville and such noted bits of scenery as the Royal gorge.

In the dim light of the globe's interior, viewing the twelve and fifteen foot curved portraits of cities and scenes, stars begin to twinkle in the sky above, and the picture of standing gazing upon nature's vast beauties is complete. The scene is projected by an ingenious electrical device.

The entire exhibit is under the supervision of F. A. Wadleigh, passenger agent, and the Western Pacific and Denver and Rio Grande. The design, construction and supervision are under the direction of F. B. Fulton, who also is the artist who painted the landscapes and sculptured the plaster models.

THE year 1915 is here. With it has come the event that will make the year's page in history stand out as in bas-relief. The Panama-Pacific International Exposition at San Francisco is the most wonderful of all celebrations and it commemorates the most wonderful achievement of man. The great Exposition is a wonderland of fascinating color. The illumination is the most spectacular ever attempted. Forty foreign nations and forty-three states and territories are participating in this \$50,000,000 monument to peace and culture. Hundreds of great special events are on the Exposition program, making several for each day of the 288 that the Exposition gates are open to the world between Feb. 20 and Dec. 4.

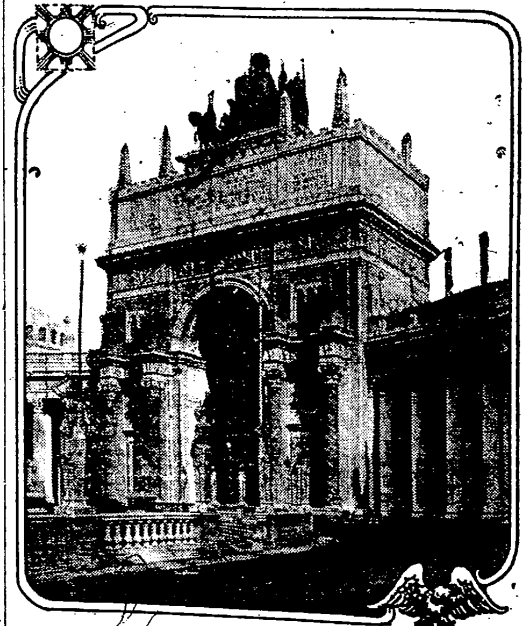
A free booklet regarding the Exposition will be sent to any one who writes the manager of the Bureau of Publications, Press Building, Exposition grounds, San Francisco.

Superb Colored Colonnades of Palace of Fine Arts at San Francisco Reduced to Plain Black and White



HERE is shown one of the sections of the 1,100 foot colonnades of the Palace of Fine Arts at the Panama-Pacific International Exposition at San Francisco. The original is beautiful with color. The columns are of red stone and white marble and the facade background is of pomelian red.

Arch of Rising Sun as Crowned By "Nations of the East"



MAGNIFICENT architectural monument at the world's greatest Exposition, the huge Arch of the Rising Sun, symbolizing Oriental civilization. Pacific International Exposition at San Francisco. Facing this arch upon the west side of the court is an arch of similar dimensions, crowned by the Nations of the West, symbolizing western civilization. The Arch of the Rising Sun is 160 feet in height, being identical in height with the famous Arc de Triomphe in Paris.

Try the News Job Department
..... For Quality Printing

THE YOUNG MAN

with a growing accession to the door of Success. He becomes a substantial man of affairs who are willing and they understand how to better himself.

A deposit of \$100. You can keep the money for as long as you have enough for an investment at any time.

Burrows National Bank

Report to Comptroller
Capital: \$25,000,000
S. PHILLIPS, President
W. BURROWS, Cashier

MAILS CLOSE

Going East
Train 222 8
Train 26 2
Train 224 6
Going West
Train 26 11
Train 541 6
for R. E. D.; Routes closed M.
W. F. O'Connell, Postmaster

GOVERNMENT

The charity that begins also covers a lot of sin.

A son was born to Mr. and Mrs. Thos. Stillman of Nile, Feb. 19th.

Mr. and Mrs. Wm. Roberts of Cuba, have twin boys born Feb. 17th.

Mr. and Mrs. Furman Rice of Cuba, have twin boys born Feb. 17th.

Miss Fannie Wilson and Wm. L. Dunning of Bolivar were married Feb. 15th.

James Rogers has purchased L. Williams his residence on Maubau Avenue.

Miss Leona Gibbs of France and Floyd Reeland were married recently.

The Wellsville Interstate Bank have engaged Jos. Lohrger for the coming season.

The National Hotel at Erie was sold on mortgage last week to J. F. Rice of this city.

Mrs. J. E. Middaugh, widow of late Capt. J. E. Middaugh.



PERSON IN COAT